

HOWARDS
JEWELLERS
STRATFORD - UPON - AVON

HOWARDS

JEWELLERS

STRATFORD - UPON - AVON



British Antique Dealers' Association



Cotswold Art & Antique Dealers' Association

WELCOME TO HOWARDS JEWELLERS STRATFORD-UPON-AVON

An independent jewellers offering an extensive collection
of fine jewellery & silver.



Art deco sapphire & diamond
pendant necklace
Sapphire being cabochon cut
circa 1925
Refer to page 11

If you require further information on any of the pieces within these pages please do not hesitate
to contact myself or a member of my team. My very best wishes

Ian

44a Wood Street, Stratford-upon-Avon, Warwickshire, CV37 6JG.

Telephone: 01789 205404
www.howardsjewellers.com

Diamond & enamel
snake bangle



Victorian garnet
snake necklace
circa 1870



Amethyst set necklace
circa 1900
Netherlands



Victorian garnet
snake necklace
circa 1870



Pink topaz
buckle
circa 1860



Victorian
amethyst earrings
circa 1880



Opal bracelet
circa 1900

Opal & diamond
pendant

Sapphire & diamond
horseshoe pendant

Opal & diamond ring
circa 1900

Sapphire &
diamond brooch
circa 1910

Topaz earrings

Rose cut diamond
cluster earrings
circa 1900

Opal, pearl
& diamond pendant
circa 1910



1. Victorian amethyst necklace
circa 1880

2. Cabochon cut sapphire & diamond bracelet
circa 1900

3. Pearl & diamond bracelet
circa 1890

4. Victorian pearl set collar
circa 1870



Victorian
collar
circa 1860

Victorian
diamond set
spray brooch
circa 1870

Sapphire &
diamond
brooch
circa 1900

Victorian
'REGARD'
brooch
circa 1870

Ruby & diamond
circle brooch
circa 1915

Rose cut
diamond ring
circa 1910

Diamond set heart
bracelet
circa 1880

Ruby & diamond ring
circa 1890



Sapphire set scent bottle
by Cartier

Sapphire pendant
by Gubelin
*principal sapphire certified
no heat treatment*



Pair of diamond
set cufflinks
circa 1930



Ruby, enamel
& mother of pearl
cufflinks



Sapphire &
diamond cufflinks

Victorian sapphire &
diamond seven stone ring
circa 1880



Emerald & diamond
cluster ring
circa 1900



Five stone ruby ring
*rubies certificated Burmese
no heat treatment*
circa 1870



Victorian ruby &
diamond cross over ring
circa 1900



Emerald & diamond
cluster ring
circa 1910



Victorian emerald &
diamond three stone ring
circa 1880



Victorian coral
& pearl ring
circa 1880



Georgian
rose cut diamond pin
circa 1790



Opal & diamond five
stone ring
circa 1900

Victorian sapphire &
diamond five stone ring
circa 1880





Antique diamond tiara
circa 1870

Victorian diamond brooch
estimated weight = 12 carats
circa 1870



Victorian Diamond cluster brooch
total estimated weight = 12 carats
circa 1870



**Antique diamond
star brooch / pendant**
circa 1875



Diamond brooch
circa 1890

**Sapphire & diamond
cross over ring**
circa 1900



**Victorian lizard brooch
set with demantoid
garnets & diamonds**
circa 1880



**Sapphire & diamond
cluster ring**
*sapphire certificated 5.85 carats
no heat treatment*



**Sapphire & diamond
cluster ring**
*sapphire certificated
no heat treatment
circa 1935*

**Victorian diamond
star brooch**
circa 1870



**Sapphire & diamond
cluster earrings**
*sapphires certificated 16.55 carats
no heat treatment*



**Diamond single stone
stud earrings**
total estimated weight = 2.33 carats



Art deco onyx
& diamond ring
circa 1930



Pink sapphire
& diamond cluster ring
circa 1915



Art deco Colombian
emerald & diamond
cluster ring



Ruby diamond &
pearl bracelet
pearls certificated natural saltwater
circa 1915



Diamond set dog brooch
circa 1930



Emerald & diamond brooch
circa 1920



Pearl sautoir necklace set
with emeralds & diamonds
circa 1915



Art deco diamond clip
circa 1930



Art deco sapphire &
diamond pendant
necklace
sapphire being
cabochon cut
circa 1925



Emerald & diamond earrings
*2 x principal diamonds
total estimated weight = 2.50 carats*



Art deco diamond earrings
circa 1930



Art deco diamond clip
circa 1930



Diamond line necklace
total estimated weight = 27 carats
circa 1870

Diamond drop earrings.
principal stones total estimated
weight = 3.38 carats
circa 1920

**Diamond single
stone ring**
estimated diamond
weight = 4.42 carats

**Diamond single
stone earrings**
total estimated weight = 3.87 carats

**Diamond set
bird brooch**
circa 1900





Art deco sapphire & diamond ring
sapphire certificated - estimated weight = 5.77 carats
no heat treatment
circa 1930

Diamond bracelet
total estimated diamond weight = 36 carats
circa 1930



Art deco diamond ring
circa 1930



Diamond bracelet

total estimated weight = 13.50 carats

**Pair of emerald &
diamond spray brooches**

**South Sea pearl &
diamond drop earrings
by Kutchinsky**

**Diamond & cultured
pearl earrings**

*total estimated diamond
weight = 2.45 carats*

**Emerald & diamond
cluster ring**
emerald certificated Colombian

Emerald & diamond ring

*emerald certificated
Colombian 5.36 carats*



Oval cut diamond ring
*principal stone certified
F, VVS2, 1.81 carats*



**Fancy yellow
diamond ring**
*certificated fancy yellow
VVS2, 1.31 carats*



**Diamond single
stone pendant**
certificated D colour 1.18 carats



**Diamond drop
earrings**
*pear shaped stones
certificated D, 1.30 carats
& E, 1.27 carats*



**Diamond single
stone earrings**
*certificated D, VS2, 2.26 carats
& D, VS1, 2.18 carats*



Diamond necklace
total estimated weight = 38 carats

**Emerald & diamond
pendant**

*emerald estimated
weight = 14.67 carats*

**Pear shaped diamond
drop earrings**

*pear shaped stones certificated
D, 1.30 carats & E, 1.27 carats*



Diamond line bracelet

total estimated weight = 9 carats



**Emerald &
diamond ring**

emerald certificated Colombian



**Diamond line bracelet
baguette & brilliant
cut stones**



Ruby & diamond cluster ring

ruby certificated Burmese no heat treatment



**Diamond drop
earrings**





Ruby five stone ring
*certificated Burmese
no heat treatment
circa 1915*



**Ruby & diamond
cluster ring**



**Ruby & diamond triple
strand bracelet**
Late 20th century



Diamond cluster earrings



**Ruby & diamond
drop earrings**
*rubies certificated Burmese
no heat treatment*

**Aquamarine &
diamond ring**
*aquamarine estimated
weight = 55 carats
circa 1974*



Diamond ring
*principal stone certificated
G, VS2, 1.01 carats
circa 1940*



**Topaz & diamond
cluster ring**
topaz weight = 16.47 carats



**Ruby & diamond
dress ring**



**Gold bracelet set
with diamonds rubies
& turquoise**



**Aquamarine &
diamond brooch**





**Baguette cut
diamond clasp**

Row of pearls
*certificated natural
saltwater*

Baguette cut diamond necklace
estimated weight = 21 carats

Long row of pearls
certificated natural saltwater



**Certificated natural pearl
& diamond ring**



Diamond single stone ring
estimated weight = 3.45 carats



**Certificated natural
pearl & diamond ring**



Ruby & diamond ring



South Sea pearl &
diamond pendant
*pearl size approximately 18.20
x 17.67mm*



Aquamarine pendant



Citrine & diamond ring

Diamond
dress ring



Pave' set
diamond ring



Diamond earrings
by Damiani

Diamond ring by Van Cleef & Arpels

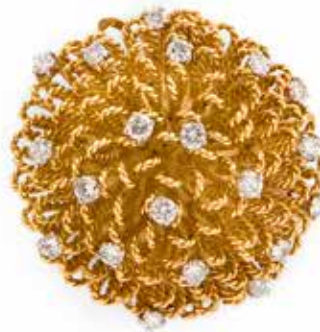


Diamond bangle
by Fred of Paris

Tiffany diamond
single stone ring
*certificated by Tiffany & Co
I, VS1, 0.56 carats*



Gold earrings
by Bulgari



Diamond set brooch
& earring suite
by Vacheron & Constantin



Bird brooch by Boucheron



Gold earrings
by Cartier





Aquamarine &
diamond ring



Amethyst ring
by Pomellato



Diamond set ring
by Bulgari



Ruby & diamond
three stone ring



Diamond set
necklace

Diamond
earrings



Gold bowl London 1925
makers Wilson & Gill
Height = 14cm (5.5 inches)



Gold dish by Cartier
numbered 9661



Gold dish by Tiffany
numbered 23513



Gold hand mirror
Birmingham 1929
maker Elkington & Co



Gold dish by Tiffany
numbered 22955





South Sea pearl
& diamond
drop earrings


Tahitian pearl
& diamond
pendant

Diamond &
freshwater pearl
earrings

Freshwater pearl
earrings

Diamond & Akoya
pearl earrings

Tahitian pearl
necklace



Golden South Sea
pearl earrings

Akoya pearl
& diamond
cluster earrings

Gold & South Sea
pearl necklace

Diamond &
Tahitian pearl
earrings

Freshwater pearl
necklace
length 94cm (36 inches)

Freshwater
pearl & diamond
drop earrings

Silver gilt stopper
London 1860
maker Robert Garrard



Silver card case
Birmingham 1908
maker Calmon & Neat



Silver stopper
London 1850



Silver stopper
Sheffield circa 1830
maker attributed to H Wilkinson



Silver stopper
London 1820
maker George Pearson




Pair of stoppers
London 1833
maker attributed to Stanley & Suter



Stopper unmarked
circa 1830
Graves is a sub-region of the wine
growing area around Bordeaux



Silver stopper
Glasgow 1863
attributed to J Murray



Diamond set
bracelet
by Mappin & Webb

Pair of gold clips
circa 1940

Chalcidony &
diamond earrings



Diamond set
earrings



18 ct gold chain
length = 81cm (28 inches)

18ct gold bracelet by Bulgari

**Emerald &
diamond drop
earrings**



**Pear shaped
diamond drop
earrings**
*total estimated
weight = 2.26 carats*



**Diamond single
stone ring**
certificated E, 0.85 carats



**Sapphire & diamond
cluster ring**
*sapphire certificated
no heat treatment*



**Diamond
cluster ring**



**Diamond single
stone ring**
certificated H, VVS2, 0.92 carats

**Coloured
diamond bracelet**



Diamond stud earrings
total estimated weight = 1.40 carats





Diamond set
hummingbird
pendant



Opal & diamond
bee brooch



Diamond set half
eternity ring



Ruby & diamond
cluster earrings



Emerald & diamond
cluster earrings



Diamond single stone ring
principal stone estimated weight = 0.55 carats



Emerald & diamond cluster ring



Yellow diamond cluster ring

Amethyst
& diamond
cluster ring



Ruby &
diamond
cluster ring



Diamond set full
eternity ring
circa 1940



Pearl & diamond
three stone ring
total estimated diamond
weight = 2.60 carats



Cabochon cut
sapphire &
diamond ring



Sapphire & diamond
cross over ring
sapphire certified
no heat treatment
diamond certified H, 1.43 carats



Emerald &
diamond oval
cluster ring



Emerald &
diamond
cluster ring



Diamond bracelet
total estimated weight = 9.5 carats





**Emerald cut diamond
single stone ring**



**Ruby & diamond
cluster ring**



**Diamond
single stone ring**
estimated weight = 1.28 carats



Yellow diamond ring
certificated 1 carat, light fancy yellow

**Amethyst & diamond
necklace**

**Diamond single
stone pendant**
estimated weight = 0.98 carats

**Amethyst &
diamond earrings**

Diamond stud earrings
total estimated weight = 0.90 carats



Diamond drop earrings



Diamond drop earrings



Sapphire & diamond pendant



Diamond single stone pendant
estimated weight = 0.56 carats



Diamond single stone stud earrings
total estimated 1.05 carats



Diamond hoop earrings



Diamond stud earrings
total estimated weight = 0.30 carats



Diamond single stone stud earrings
total estimated weight = 1.30 carats



Aquamarine &
diamond cluster
earrings



Morganite & diamond
cluster pendant



Diamond
set cross



Diamond
cluster
pendant



Diamond set
earrings



Ruby & diamond
earrings



Diamond
cluster earrings





18ct gold bangle

Gold bangle

18ct gold necklace
by Chimento

18ct gold bracelet



Diamond half eternity ring



Diamond half eternity ring



Diamond three stone ring



Sapphire & diamond half eternity ring

Ruby & diamond half eternity ring



Emerald & diamond half eternity ring

Ruby & diamond drop earrings



Diamond full eternity ring



Diamond single stone ring

estimated weight = 0.61 carats



South Sea pearl
& diamond drop
earrings

South Sea pearl &
diamond pendant

South Sea pearl
& diamond drop
earrings

South Sea pearl
stud earrings

Akoya pearl &
diamond cluster
earrings

Row of South
Sea pearls



Freshwater
pearl &
diamond
pendant

Freshwater
pearl &
diamond
pendant

Freshwater
pearl &
diamond
pendant

Diamond &
South Sea pearl
earrings

Multi gem &
freshwater pearl
drop earrings

Freshwater pearl &
diamond earrings

Akoya pearl &
diamond earrings

Freshwater pearl necklace



Silver necklace

Silver necklace

Silver bangle

Silver bracelet


Silver bracelet



Silver
Bracelet



Silver
necklace



Silver
earrings



Silver
pendant



Silver
earrings

Pair of silver pheasants
Hallmarked London
Date 1936
Maker attributed to Francis Higgins
Length approximately 12 inches (30cm)



E & OE

Actual size and colour reproduction of articles may not be exact due to print production. Weights and dimensions shown are only approximations. Historically many gemstones have received a variety of treatments to enhance their appearance. Treatments on stones may be assumed unless accompanied by certification stating otherwise. For further information on items contained within these pages and full descriptions, please do not hesitate to contact us.





44a Wood Street, Stratford-upon-Avon, Warwickshire, CV37 6JG.
telephone: 01789 205404
www.howardsjewellers.com