

HOWARDS  
JEWELLERS  
STRATFORD - UPON - AVON



# HOWARDS

JEWELLERS  
STRATFORD - UPON - AVON



British Antique Dealers' Association

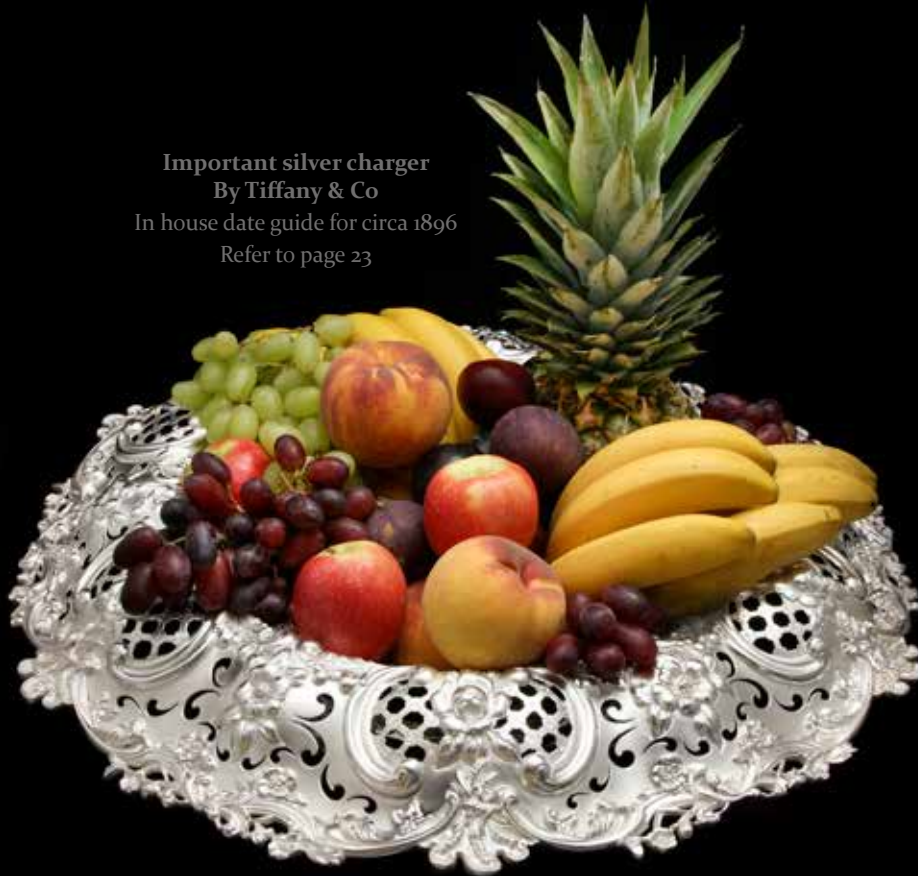


Cotswold Art & Antique Dealers' Association

# WELCOME TO HOWARDS JEWELLERS STRATFORD-UPON-AVON

An independent jewellers offering an extensive collection  
of fine jewellery & silver.

Important silver charger  
By Tiffany & Co  
In house date guide for circa 1896  
Refer to page 23




If you require further information on any of the pieces within these pages  
please do not hesitate to contact myself or a member of my team.

My very best wishes

Ian

44a Wood Street, Stratford-upon-Avon, Warwickshire, CV37 6JG.


Telephone: 01789 205404  
[www.howardsjewellers.com](http://www.howardsjewellers.com)



Three row coral necklace  
circa 1900  
With original case




Lapis lazuli  
& diamond earrings



Lapis lazuli  
& pearl drop  
earrings  
circa 1900



Pink sapphire & diamond  
cluster ring  
*Pink sapphire certificated  
no heat treatment*  
circa 1890



Jade & diamond  
drop earrings  
circa 1930

Edwardian pearl &  
diamond pendant  
circa 1910

Pearl & diamond  
tortoise brooch  
circa 1910

Moonstone &  
pearl fly brooch  
circa 1900

Coral & pearl necklace  
circa 1900

Turquoise earrings  
circa 1890


Edwardian  
diamond ring  
circa 1910

Garnet &  
diamond ring  
circa 1770


Demantoid  
garnet fly brooch  
circa 1890

Garnet drop earrings





Edwardian ruby &  
diamond bow brooch  
circa 1910



Edwardian  
peridot, pearl &  
diamond necklace  
circa 1910



Edwardian natural  
pearl & diamond  
pendant  
circa 1910



Ruby & diamond  
cross over ring  
circa 1900



Victorian opal  
& diamond ring  
circa 1890



Demantoid garnet &  
diamond bow brooch  
circa 1910



Diamond set  
marquise shaped ring  
circa 1920

Edwardian ruby & diamond brooch  
circa 1910



Edwardian diamond necklace  
circa 1910



Diamond drop earrings

Ruby & diamond  
five stone ring

*Rubies certificated no  
heat treatment  
origin Burmese  
circa 1915*



Diamond three  
stone ring



Edwardian pearl  
& diamond ring



Ruby & diamond hair clip  
French  
circa 1920



Fine portrait miniature  
set in a sapphire, diamond  
& pearl pendant frame  
with a pearl set chain  
circa 1915





**Diamond bow  
double clip brooch**  
circa 1925



**Sapphire & diamond necklace**  
circa 1920

**Ruby ring with  
diamond shoulders**

*estimated ruby weight = 2.56 carats*



**Ruby &  
diamond ring**  
circa 1970



**Diamond ring**  
circa 1930



**Sapphire &  
diamond ring**  
circa 1915



**Diamond  
cluster earrings**  
circa 1930



**Ruby & diamond  
cross over ring**  
circa 1980

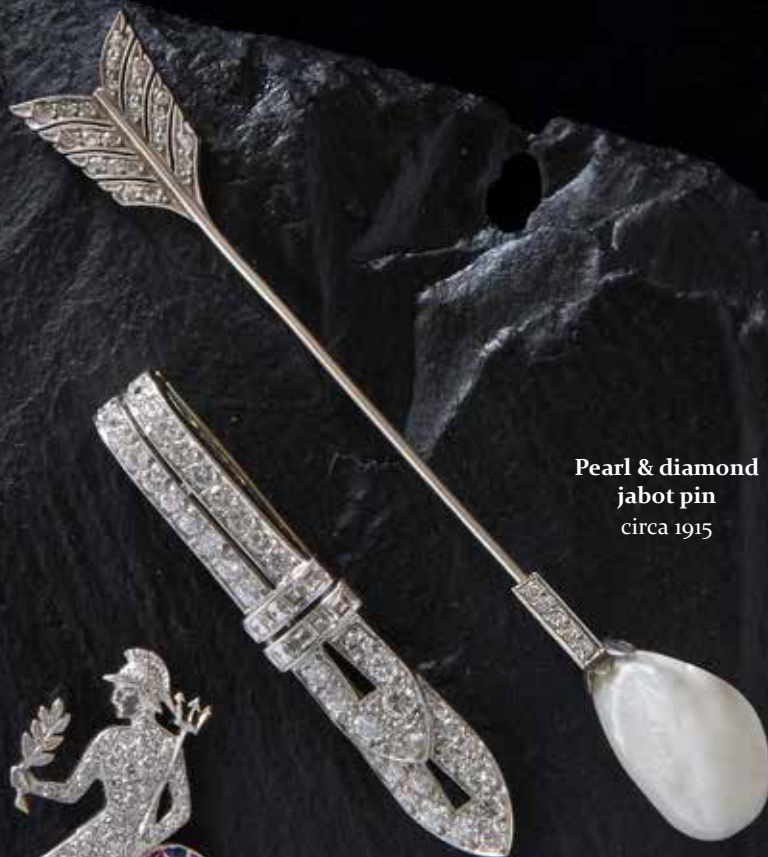


**Edwardian pearl & diamond bar brooch**

*pearls certificated natural saltwater  
circa 1910*



**Diamond  
drop earrings**  
circa 1960



**Pearl & diamond  
jabot pin**  
circa 1915



**Topaz &  
diamond ring**  
circa 1915



**Pearl &  
diamond ring**  
*pearl certificated  
natural saltwater*  
circa 1950



**Britannia brooch set with  
diamonds, rubies & sapphires**  
circa 1925

**Art Deco diamond clip**  
circa 1930

**Art Deco emerald  
& diamond ring**  
circa 1930



**Diamond dress ring**

*principle stone estimated  
weight = 2.03 carats*



**Diamond set full  
eternity ring**



**Diamond single  
stone ring**

*certificated H,  
2.03 carats*



**Diamond princess  
cut solitaire ring**

*estimated weight = 1.04 carats,  
assessed G / H*

**Ruby & diamond  
bracelet**



**Diamond line  
bracelet**

*estimated weight = 5.20 carats*



**Stylised swan brooch  
set with coral, onyx  
& diamonds  
by Asprey**



**Aquamarine &  
diamond brooch**



**Diamond stud earrings**

*total estimated weight = 3.30 carats*



**Diamond single stone  
pendant cut in the form  
of a horse's head**  
*certificated G, SI1, 2.11 carats*



**Pear shaped ruby  
& diamond three  
stone ring**



**Emerald & diamond  
three stone ring**  
*circa 1910*



**Diamond pendant  
set with sapphires**  
*marquise cut stone  
estimated weight = 2.27 carats*



**Sapphire &  
diamond  
cluster ring**  
*estimated sapphire  
weight = 3 carats*



**Art Deco coral &  
diamond earrings**



**Diamond  
stud earrings**



**Victorian  
diamond bangle**  
circa 1885



**Diamond cluster  
earrings**



**Emerald & diamond brooch**  
circa 1930



**Diamond cross over ring**  
*two principal stones total  
estimated weight = 3.30 carats*



**Ruby & diamond ring**  
*ruby estimated weight = 3.72 carats*



**Victorian  
diamond brooch  
with a detachable  
pearl drop**  
*estimated diamond  
weight = 12 carats*



**Diamond tassel earrings**  
circa 1920



**Diamond  
cluster ring**  
*principal stone estimated  
weight = 2.57 carats*



**Sapphire & diamond ring**  
circa 1955



**Diamond cluster ring**  
*principal stone certificated G, VSi, 1.35 carats*



**Diamond solitaire ring**  
*certificated D, VSi, 2.15 carats*



**Oval cut diamond ring**  
*principal stone certificated F, VVS2, 1.81 carats*



**Diamond single stone stud earrings**  
*total estimated weight = 3.98 carats*



**Diamond set heart brooch / pendant**  
*estimated weight = 9.4 carats  
circa 1930*



**Sapphire & marquise shaped diamond cluster ring**



**Ruby & diamond cluster ring**  
*ruby certificated -  
origin opinion Burmese*



**Colombian emerald & diamond ring**  
*certificated*



**Diamond line bracelet**  
*estimated weight = 12.35 carats*



**Diamond cluster earrings**

*two principal stones total  
estimated weight = 3.25 carats  
circa 1930*



**Edwardian sapphire & diamond cluster earrings**  
circa 1910



**Victorian diamond fringe necklace**  
circa 1880



**Diamond drop earrings**  
circa 1930





**Diamond ring**  
*principal stone = 4.53 carats*  
circa 1930



**Sapphire & diamond  
cluster ring**



**Fine French brooch**  
*set with rubies, emeralds & diamonds*  
circa 1890



**Victorian diamond rivière  
necklace with a detachable  
diamond cluster pendant**  
circa 1870

**Diamond baguette  
full eternity ring**



**Diamond solitaire ring**  
*estimated weight = 2.03 carats*



**Topaz &  
diamond  
marquise ring**



**Sapphire & diamond  
cluster ring**  
*sapphire certificated  
no heat treatment  
circa 1935*



**Diamond dress ring**  
*principal stone estimated  
weight = 1.59 carats*



**South Sea pearl  
& baguette cut  
diamond ring**  
mounted by Cartier



**Diamond earrings**  
*set with marquise, baguette  
& brilliant cut stones*



**Art Deco diamond brooch**  
circa 1930



**Ruby & diamond  
cluster ring**  
*principal stone estimated  
weight = 6.65 carats*



**Sapphire &  
diamond ring**



**Oval diamond  
cluster ring**

**Emerald &  
diamond brooch**  
circa 1940



**Diamond stylised  
leaf brooch**  
circa 1935

**Diamond bracelet**  
*estimated weight = 21 carats*





Gold ring  
by Tiffany & Co

Diamond set  
earrings

Diamond set  
brooch  
by Birks

Diamond set  
collar necklace

Gold drop  
earrings  
by Pomellato

Gold graduated  
bead necklace

Gold dress ring

Tiffany & Co  
bean pendant

**Charm bracelet  
by Cartier**

**Pear shaped  
diamond pendant**

**Sapphire &  
diamond drop  
earrings**

**Emerald cut  
diamond ring**

**Ruby & diamond  
cluster earrings**

**Ruby ring with baguette  
cut shoulder stones**

**Diamond solitaire ring**  
*certificated H, VS1 0.88 carats*



**Diamond set ring  
by Cartier**

**Fancy coloured marquise  
cut diamond ring**  
*certificated light green / yellow,  
VS1, 1.00 carat*

**Diamond line bracelet  
by Cartier**

Bracelet set with diamonds &  
multi-coloured sapphires  
circa 1970



Earrings set with diamonds &  
multi-coloured sapphires  
circa 1970



Gold earrings  
by Van Cleef & Arpels



Ruby & diamond  
brooch & earring suite  
by Tiffany & Co  
circa 1970



Lapis lazuli &  
pearl necklace  
by Bulgari  
circa 1980



Lapis lazuli &  
pearl earrings  
by Bulgari  
circa 1980





Peridot, amethyst  
& diamond suite



Citrine & diamond  
drop earrings



Peach tourmaline  
& diamond  
pendant



Green tourmaline  
& diamond  
pendant



Sapphire &  
diamond ring



Topaz &  
diamond ring

Tanzanite &  
diamond ring



Tsavorite garnet  
& diamond ring



Cabochon emerald  
& diamond ring



Bracelet set with blue  
and pink sapphires  
by Bulgari

Gold bracelet  
by Bulgari

Amethyst &  
diamond pendant  
*amethyst estimated  
weight = 78 carats*



Cabochon emerald &  
diamond earrings



Coral &  
diamond  
dress ring



Amethyst &  
diamond day &  
night earrings





## George III silver centrepiece

Date ~ 1790  
Maker ~ W. Pitts  
Hallmarked ~ London



## Important silver charger By Tiffany & Co

In house date guide for circa 1896

Pattern number 687

Directorship of Charles F. T. Tiffany

Weight ~ 3,576 grams (115 troy oz)

Diameter ~ 60cm (23.5 inches)





Diamond set  
gold necklace

Diamond set  
bangle

Diamond  
dress ring

Diamond  
earrings

Mabe pearl &  
diamond earrings



Bangle set with rubies  
& sapphires



18ct gold necklace

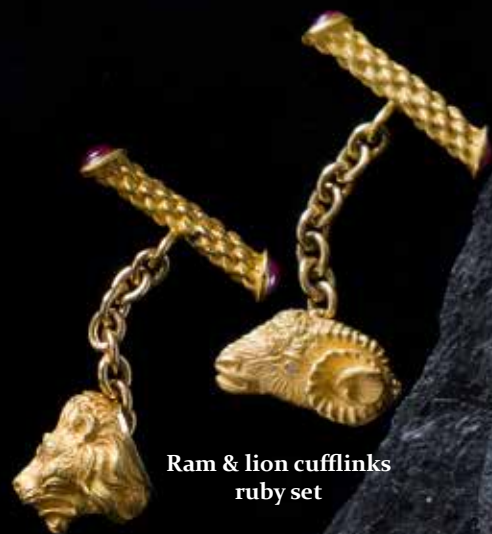
Pearl set chain  
length 124cm



Mabe pearl  
earrings



Pearl & diamond  
pendant  
*principal pearl certificated  
natural salt water*



Ram & lion cufflinks  
ruby set



Diamond set  
cufflinks



Enamel  
cufflinks

Tourmaline  
cufflinks



Gold torpedo  
shaped cufflinks



Gold cufflinks  
by Bulgari



Diamond set  
tie pin



Diamond set  
cufflinks



Diamond  
set sphere  
cufflinks

**Victorian silver saw**  
length 21.5cm London date 1896  
maker W. Gibson & J.L. Langman



**Silver monkey sugar nips**  
London date 1889  
maker W. Leuchars



**Gold box**  
circa 1960




**Oriental cigar case**  
London date 1889  
maker Wang Hing & Co



**Gold box**  
circa 1960



**Diamond set  
double clip brooch**  
*estimated weight 24 carats*




**Diamond set  
earrings**



**Victorian diamond  
centrepiece**  
*on five strands of cultured  
freshwater pearls  
circa 1870*



**Cabochon ruby &  
diamond cluster ring**  
*ruby certificated 5.97 carats no  
heat treatment opinion Burmese*



**Diamond  
cluster ring**

South Sea pearl  
& diamond day &  
night earrings



South Sea pearl &  
diamond pendant



Freshwater pearl  
& diamond drop  
earrings



South Sea pearl  
& diamond drop  
earrings



Diamond hoop  
earrings

*estimated weight = 5.80 carats*

Pearl & diamond  
hoop earrings





South Sea pearl  
necklace

Diamond &  
freshwater pearl  
drop earrings


Detachable  
South Sea pearl  
& diamond drop  
earrings

South Sea pearl &  
diamond earrings

South Sea pearl &  
diamond earrings

Gold South Sea  
pearl earrings

South Sea pearl &  
diamond earrings



Freshwater  
pearl earrings

Freshwater pearl &  
diamond earrings

South Sea  
pearl &  
diamond  
drop  
earrings

South Sea pearl &  
diamond necklace

South Sea pearl  
stud earrings

Pink freshwater  
pearl necklace

Mabe pearl &  
diamond earrings



Carved citrine earrings



Rose quartz earrings



Green quartz earrings



Ruby & diamond bracelet



Sapphire & diamond cluster ring

Emerald & diamond ring



Oval cut diamond single stone ring



Topaz & diamond cluster ring



Ruby & diamond cluster ring



Amethyst earrings



Amethyst drop earrings



Sapphire &  
diamond ring



Ruby &  
diamond ring



Amethyst &  
diamond earrings



Diamond circle  
pendant



Diamond circle  
pendant



Ruby &  
diamond  
pendant



Diamond  
earrings



Diamond stud  
earrings  
*total estimated  
weight = 0.75 carats*



Oval diamond  
cluster earrings



Sapphire &  
diamond earrings

Diamond necklace

Diamond cluster earrings

Orange sapphire & diamond ring

Diamond half eternity ring

Diamond set knot earrings

Diamond & yellow sapphire cluster earrings

Diamond stud earrings

*total estimated weight = 0.30 carats*

Emerald & diamond half eternity ring

Ruby & diamond half eternity ring

Sapphire & diamond cluster earrings

Diamond cluster earrings

Ruby & diamond  
ladybird brooch



Opal & diamond  
cluster earrings



Opal & diamond  
bee brooch



Diamond  
treble clef  
brooch



Diamond  
stud  
earrings

Diamond  
drop earrings



Diamond  
drop earrings



Diamond  
drop earrings



Diamond line  
necklace

*estimated weight = 5.22 carats*





1. Akoya pearl earrings
2. Akoya pearl set chain
3. South Sea pearl & diamond pendant
4. Akoya pearl & diamond pendant
5. Akoya pearl & diamond cluster earrings
6. Freshwater pearl & diamond pendant
7. Freshwater pearl & diamond earrings
8. Freshwater pearl & diamond earrings

1. Akoya & South Sea pearl necklace set with diamond rondels
2. Akoya pearl necklace
3. South Sea pearl & diamond pendant
4. Freshwater pearl & diamond drop earrings
5. Tahitian pearl & diamond earrings
6. Akoya pearl stud earrings
7. Multi-coloured Akoya pearl bracelet
8. Freshwater pearl & diamond pendant



Silver collar

Silver earrings

Silver  
pendant

Silver bracelet

Silver bangle

Silver earrings

Silver bracelet

Silver bangle

Enamel  
silver-gilt ear  
cuff earrings



Silver bangle

Silver necklace



Silver  
bracelet



Silver  
enamel ear  
cuff earrings

Enamel  
silver-gilt  
cuff earrings



Silver  
necklace



Silver bead necklace



Silver  
ear cuff  
earrings



Silver  
bracelet



Silver  
bracelet

E & OE

Actual size and colour reproduction of articles may not be exact due to print production. Weights and dimensions shown are only approximations. Historically many gemstones have received a variety of treatments to enhance their appearance. Treatments on stones may be assumed unless accompanied by certification stating otherwise. For further information on items contained within these pages and full descriptions, please do not hesitate to contact us.

Pair of silver & glass  
'lovers' decanters



Silver & glass decanter



Silver & glass decanter



Silver Cat  
cream jug



Silver  
Planished  
bowl



Silver & glass  
tumbler



Silver Whisky  
tumbler cup



Silver wine  
coaster



Silver mounted  
Quaich







